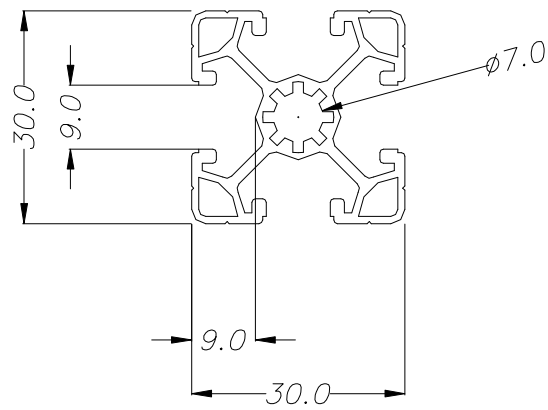
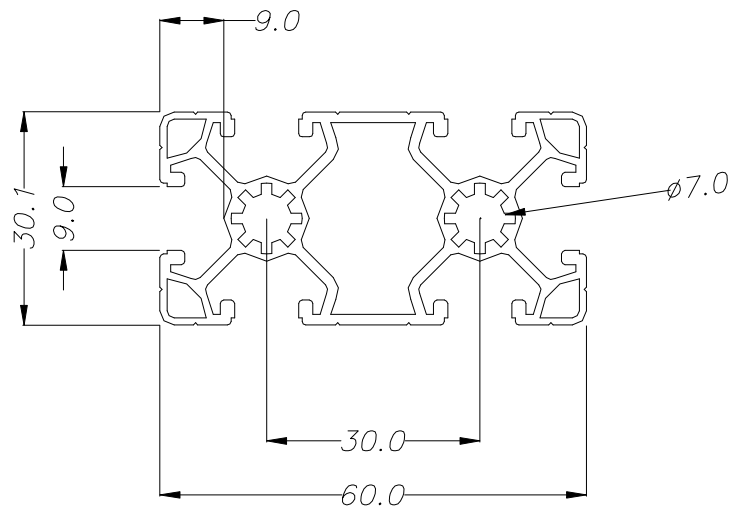


EL 3001

**PERFIL 30x30****01**

Massa (Kg/m):	0.75
Comprimento:	6m $\pm$ 5mm
Mom. de inércia Ix (cm <sup>4</sup> ):	2.63
Mom. de inércia Iy (cm <sup>4</sup> ):	2.63
Mom. de resist. Wx (cm <sup>3</sup> ):	1.74
Mom. de resist. Wy (cm <sup>3</sup> ):	1.74

EL 3002

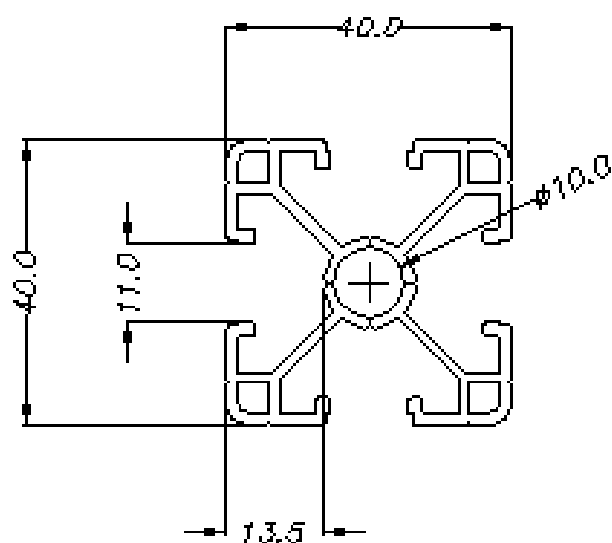
**PERFIL 30x60**

Massa (Kg/m):	1.30
Comprimento:	6m $\pm$ 5mm
Mom. de inércia Ix (cm <sup>4</sup> ):	18.35
Mom. de inércia Iy (cm <sup>4</sup> ):	4.74
Mom. de resist. Wx (cm <sup>3</sup> ):	6.09
Mom. de resist. Wy (cm <sup>3</sup> ):	3.07

02

## PERFIL 40x40 L

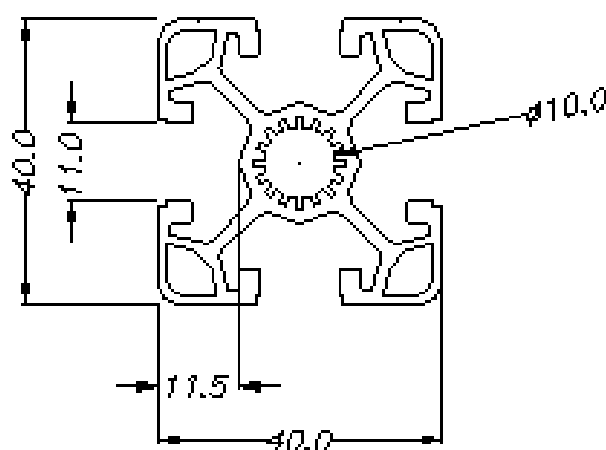
EL 4001



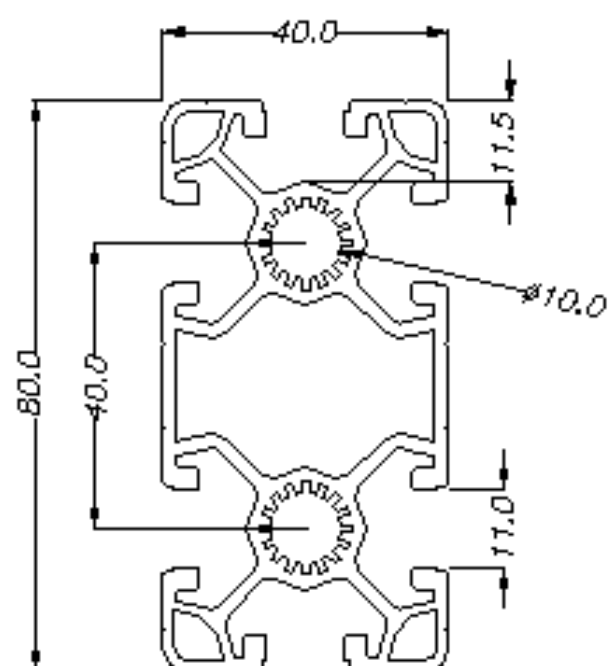
Massa (Kg/m):	1.03
Comprimento:	8m ±5mm
Mem. de inércia Ix (cm <sup>4</sup> ):	7.56
Mem. de inércia Iy (cm <sup>4</sup> ):	7.56
Mem. de resist. Wx (cm <sup>3</sup> ):	4.65
Mem. de resist. Wy (cm <sup>3</sup> ):	4.65

## PERFIL 40x40 P

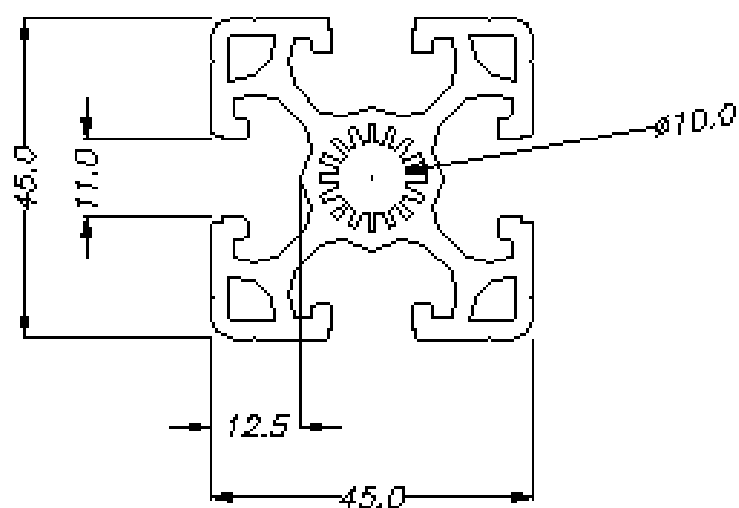
EL 4002



Massa (Kg/m):	1.10
Comprimento:	8m ±5mm
Mem. de inércia Ix (cm <sup>4</sup> ):	11.20
Mem. de inércia Iy (cm <sup>4</sup> ):	11.20
Mem. de resist. Wx (cm <sup>3</sup> ):	4.32
Mem. de resist. Wy (cm <sup>3</sup> ):	4.32

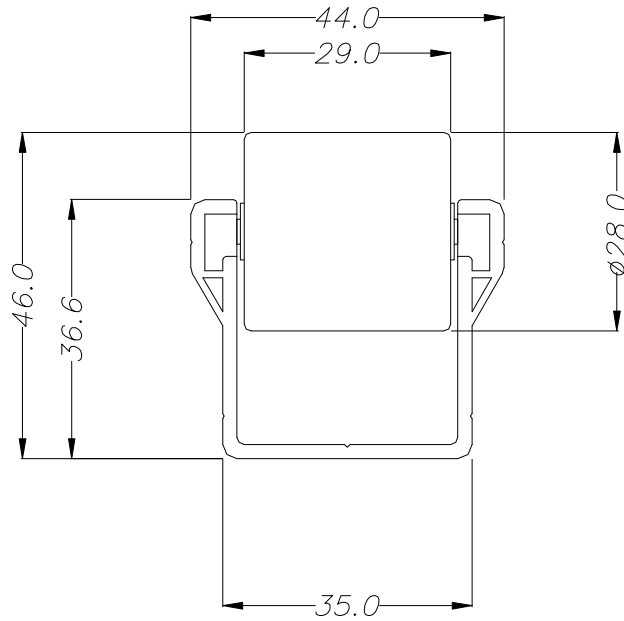


Massa (Kg/m):	2.38
Comprimento:	6m ±5mm
Mom. de inércia Ix (cm <sup>4</sup> ):	46.74
Mom. de inércia Iy (cm <sup>4</sup> ):	14.23
Mom. de resist. Wx (cm <sup>3</sup> ):	12.65
Mom. de resist. Wy (cm <sup>3</sup> ):	6.43



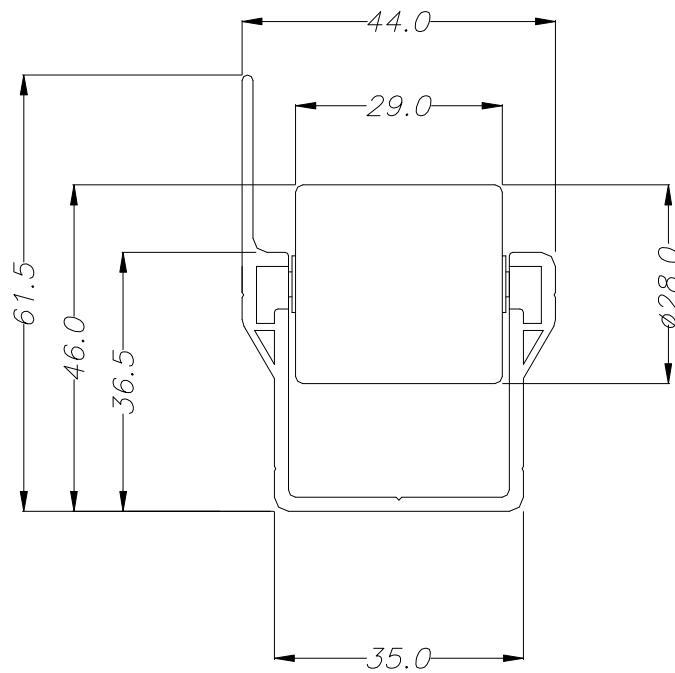
Massa (Kg/m):	2.04
Comprimento:	8m $\pm$ 5mm
Mom. de inércia Ix (cm <sup>4</sup> ):	15.58
Mom. de inércia Iy (cm <sup>4</sup> ):	15.58
Mom. de resist. Wx (cm <sup>3</sup> ):	6.92
Mom. de resist. Wy (cm <sup>3</sup> ):	6.92

EL TR01

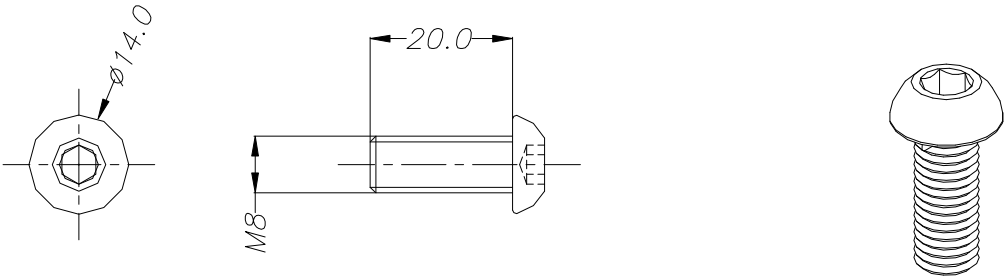
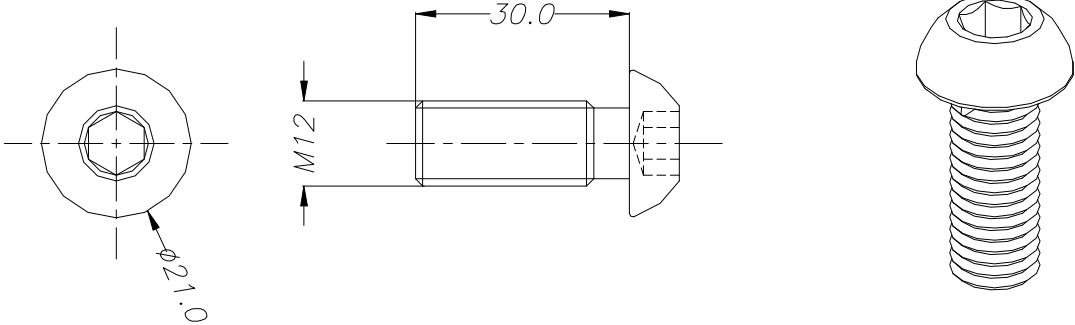
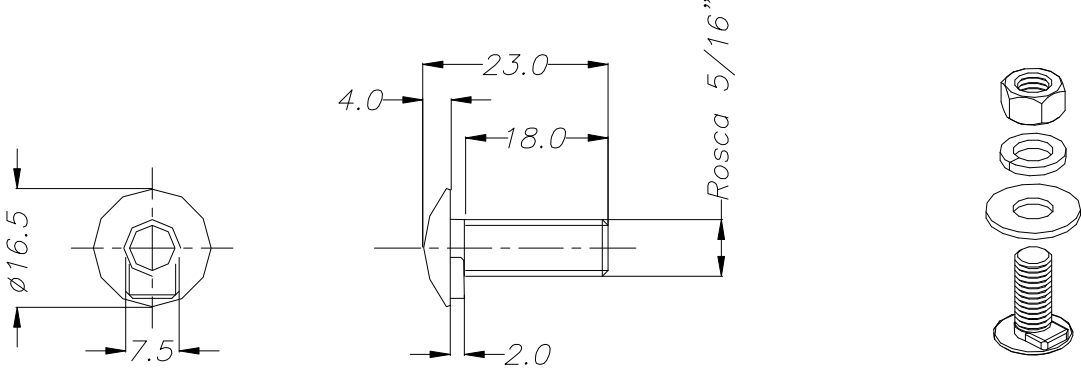
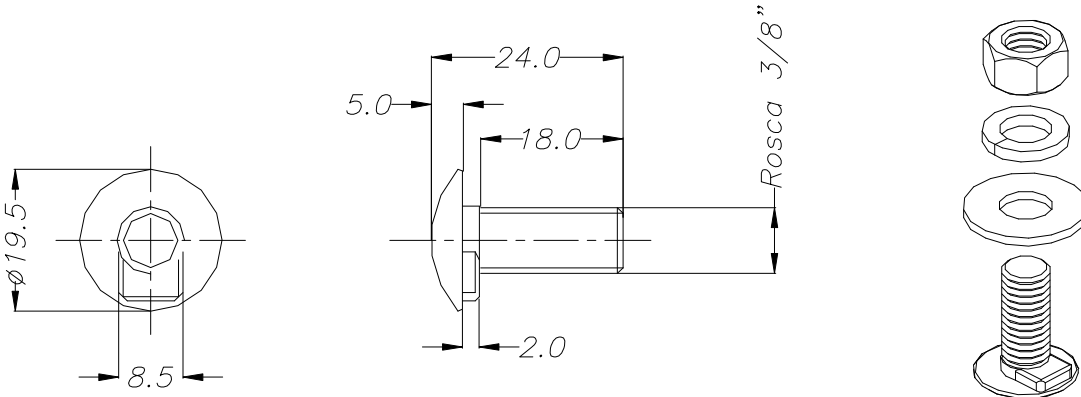
**TRILHO DE ROLETES s/ ABA****05**

Capacidade:	40Kg/m
Massa (Kg/m):	0.72
Comprimento:	6m ±5mm

EL TR02

**TRILHO DE ROLETES c/ ABA**

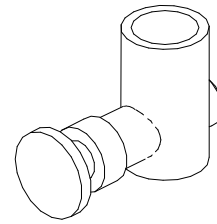
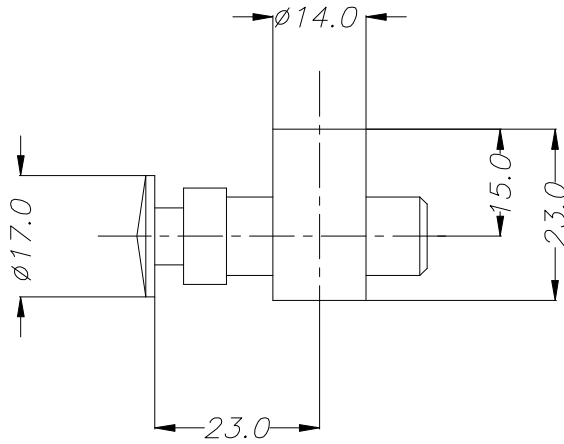
Capacidade:	40Kg/m
Massa (Kg/m):	0.82
Comprimento:	6m ±5mm

<b>06</b>	<b>PARAFUSO M8x20</b>	EL PA01
		
<b>PARAFUSO M12x30</b>		EL PA02
		
<b>PARAFUSO c/ TRAVA 5/16"</b>		EL PA03
		
<b>PARAFUSO c/ TRAVA 3/8"</b>		EL PA04
		

EL EF01

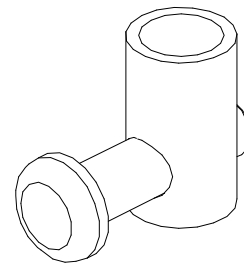
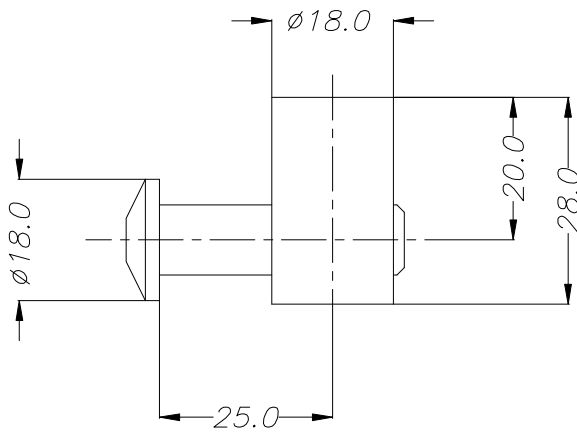
**ELEMENTO DE FIXAÇÃO**

**07**



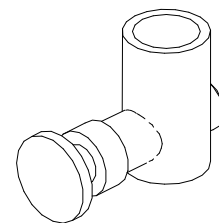
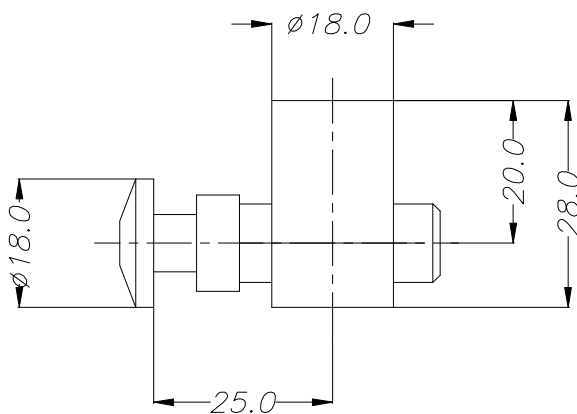
EL EF02

**ELEMENTO DE FIXAÇÃO**

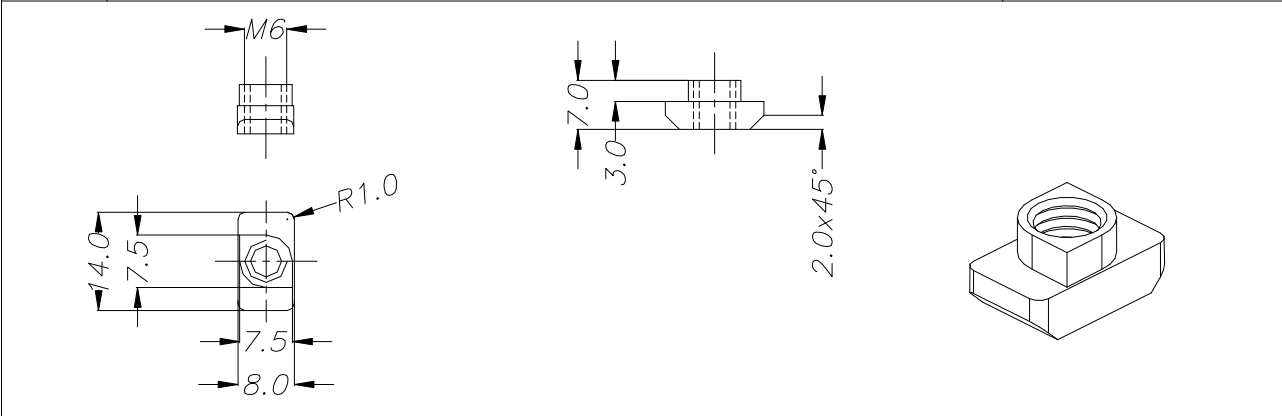


EL EF03

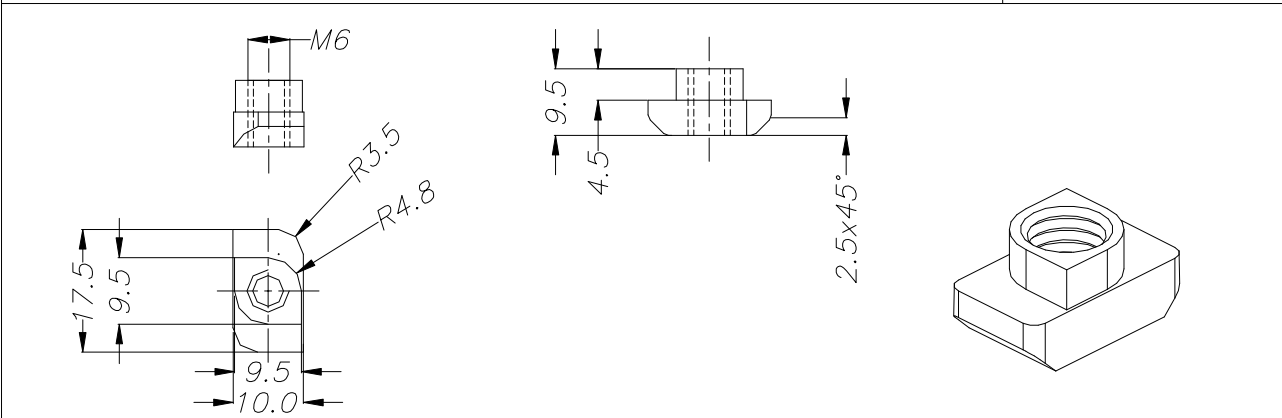
**ELEMENTO DE FIXAÇÃO**



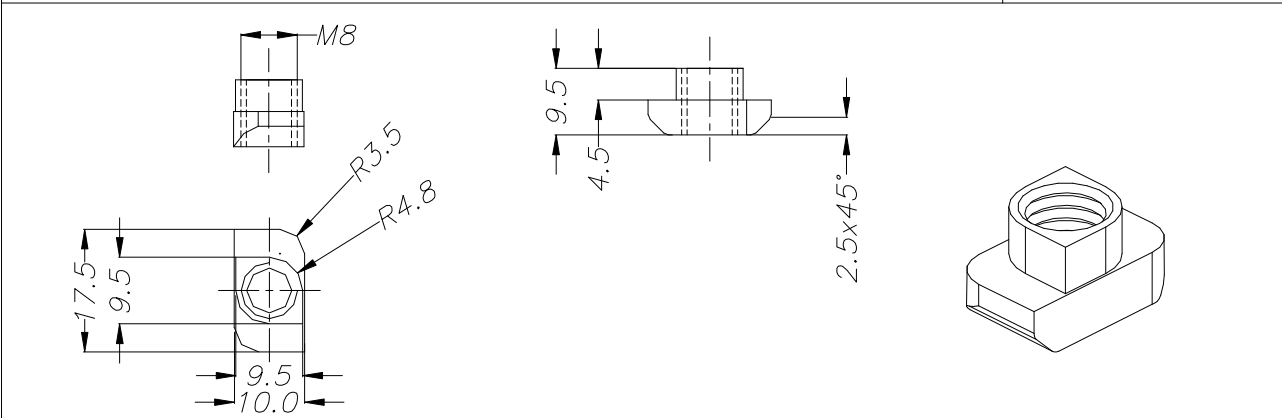
<b>08</b>	<b>PORCA T M6 p/ ranhura 8</b>	EL PA05
-----------	--------------------------------	---------



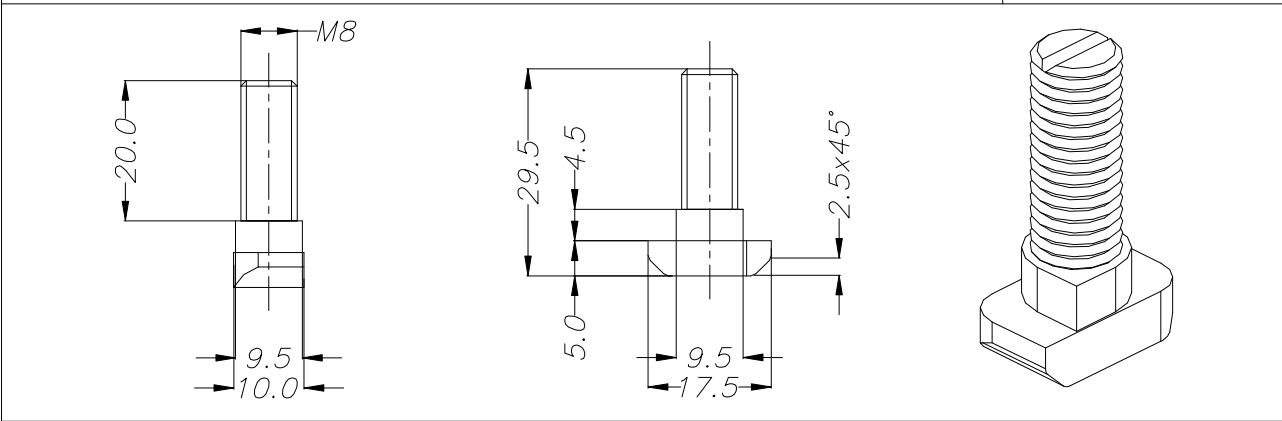
<b>PORCA T M6 p/ ranhura 10</b>	EL PA06
---------------------------------	---------



<b>PORCA T M8 p/ ranhura 10</b>	EL PA07
---------------------------------	---------



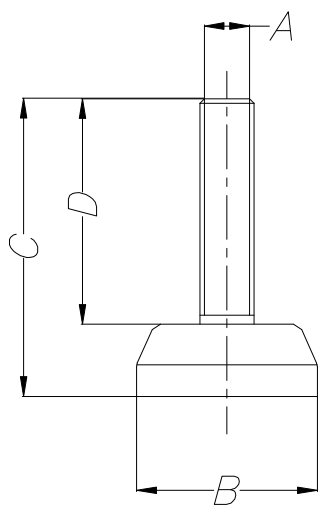
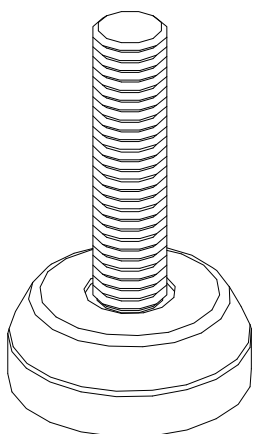
<b>PARAFUSO T M8 p/ ranhura 10</b>	EL PA08
------------------------------------	---------





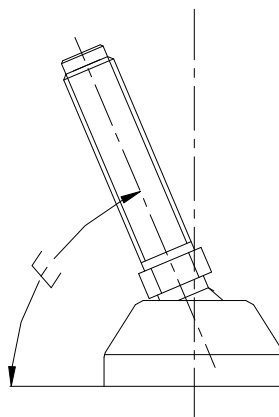
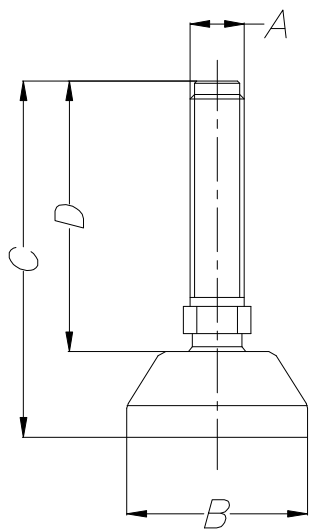
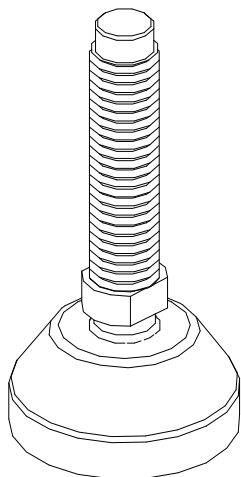
## PÉ FIXO

09

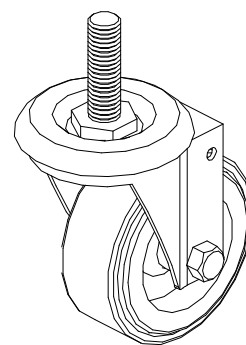
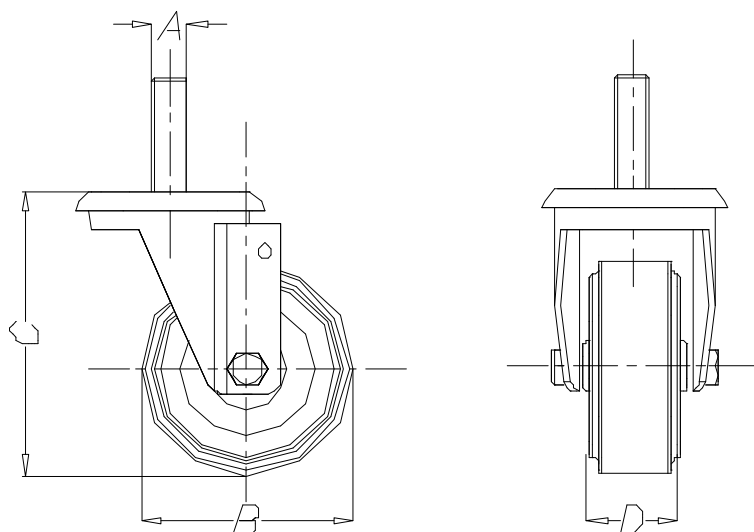


Código	A	B	C	D
EL PF01	M8	∅40.0	66	50
EL PF02	M12	∅40.0	66	50

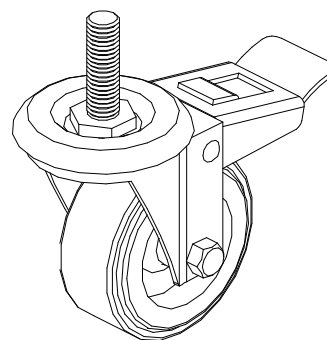
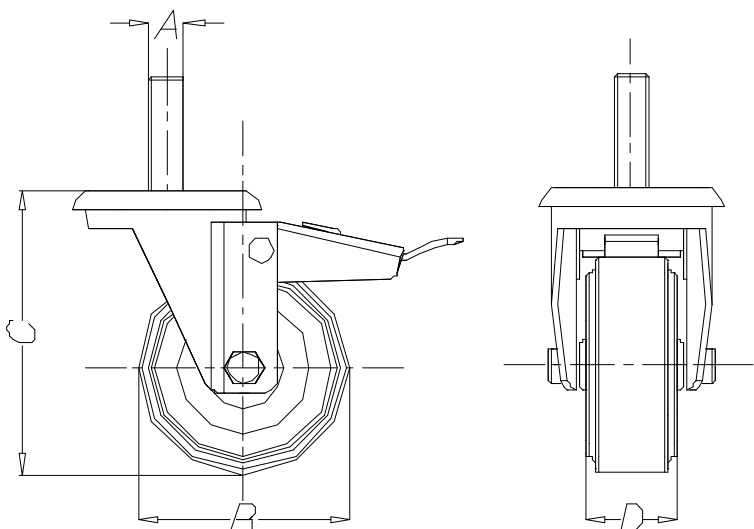
## PÉ ARTICULADO



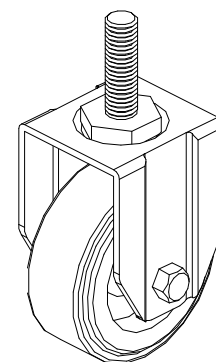
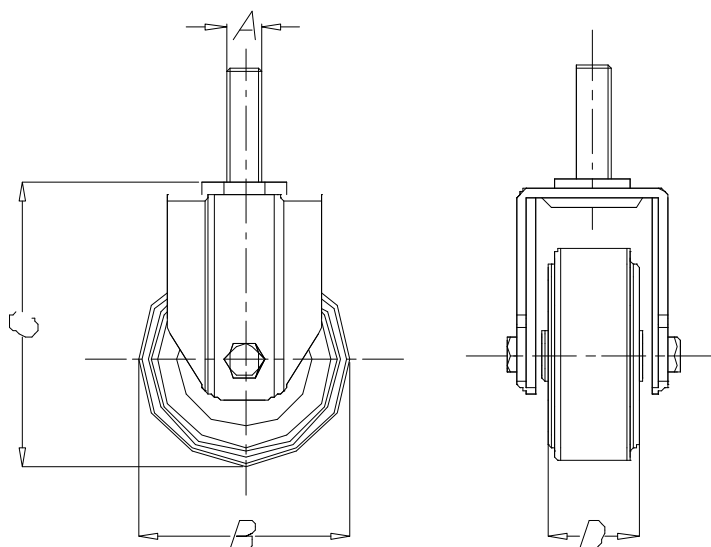
Código	A	B	C	D	E
EL PA01	M8	∅40.0	79	60	65°
EL PA02	M12	∅40.0	79	60	65°
EL PA03	M12	∅60.0	79	60	65°
EL PA04	M12	∅80.0	79	60	65°

**10****RODÍZIO GIRATÓRIO s/ TRAVA**

Código	A	B	C	D
EL RGD1	1/2"	3"	100.0	32.0
EL RGD3	1/2"	4"	125.0	32.0

**RODÍZIO GIRATÓRIO c/ TRAVA**

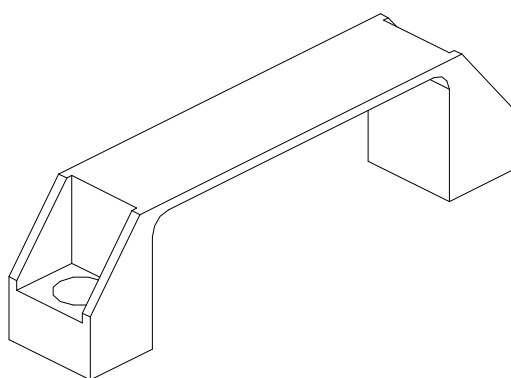
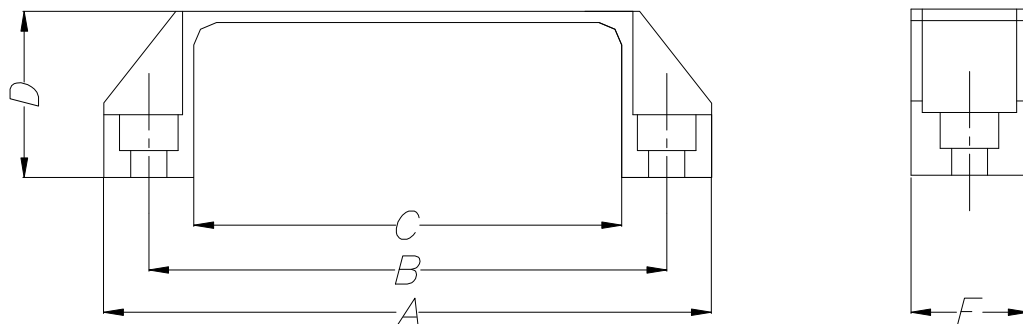
Código	A	B	C	D
EL RGD2	1/2"	3"	100.0	32.0
EL RGD4	1/2"	4"	125.0	32.0

**RODÍZIO FIXO**

Código	A	B	C	D
EL RFD1	1/2"	3"	100.0	32.0
EL RFD2	1/2"	4"	125.0	32.0

## PUXADOR

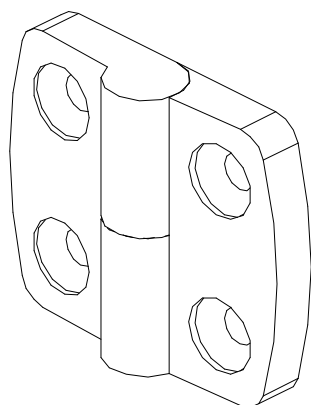
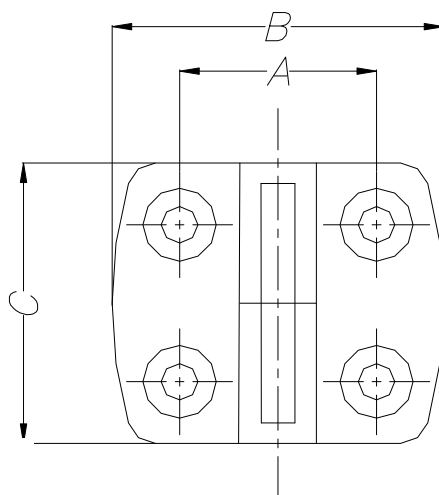
11



Material: nylon

Código	A	B	C	D	E	Fixação
EL PU01	106.5	92	74	36	21	M6
EL PU02	133	115	94	41	26	M8
EL PU03	196	179	152	49	28.5	M8

## DOBRADIÇA



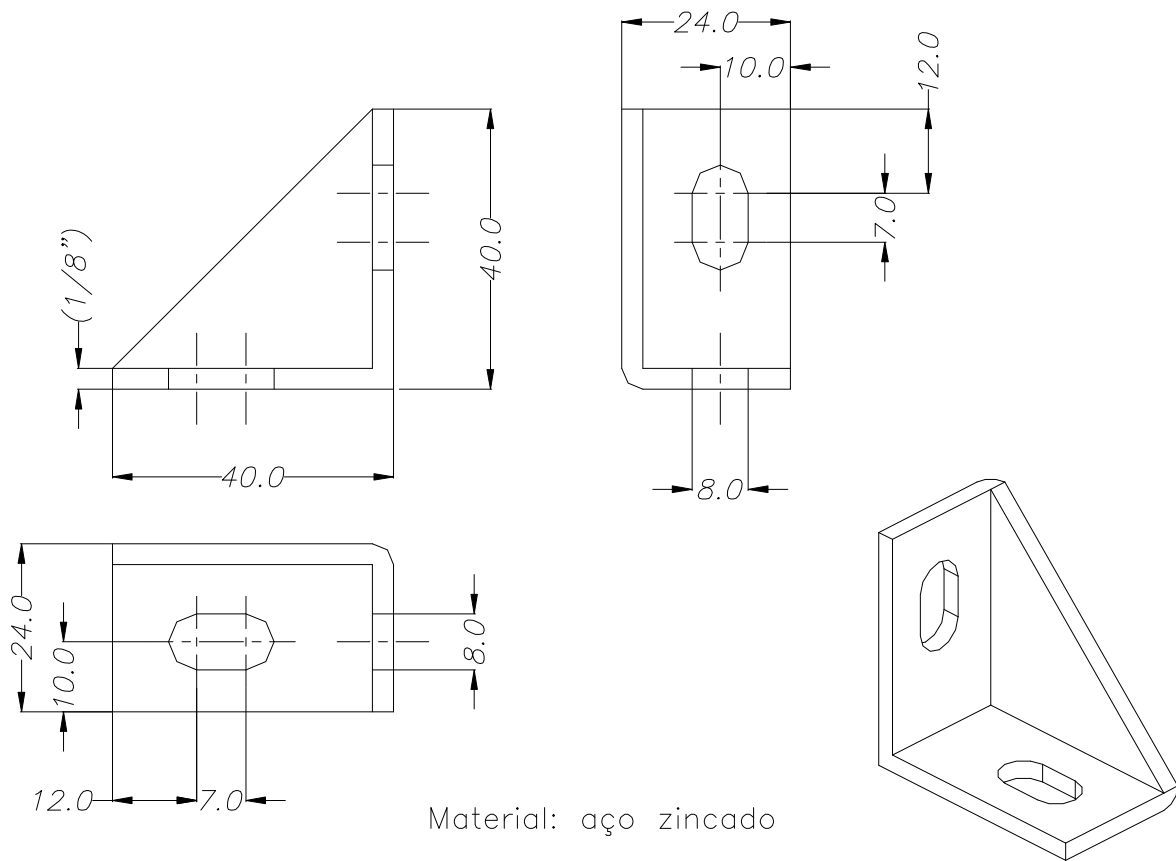
Material: nylon

Código	A	B	C	Fixação
EL D001	35.0	59.0	50.0	M6
EL D002	44.0	67.0	50.0	M6

12

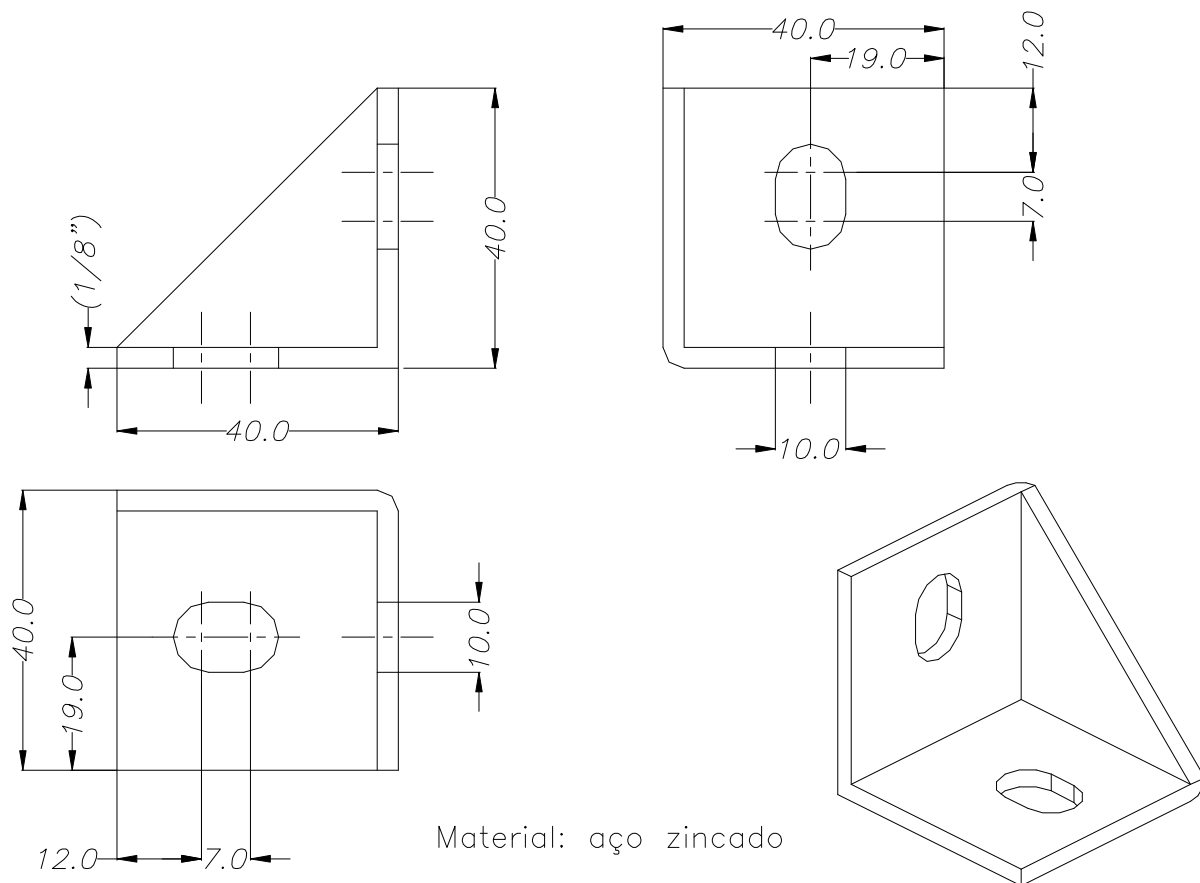
**CANTONEIRA 40x40x24**

EL CA01



**CANTONEIRA 40x40x40**

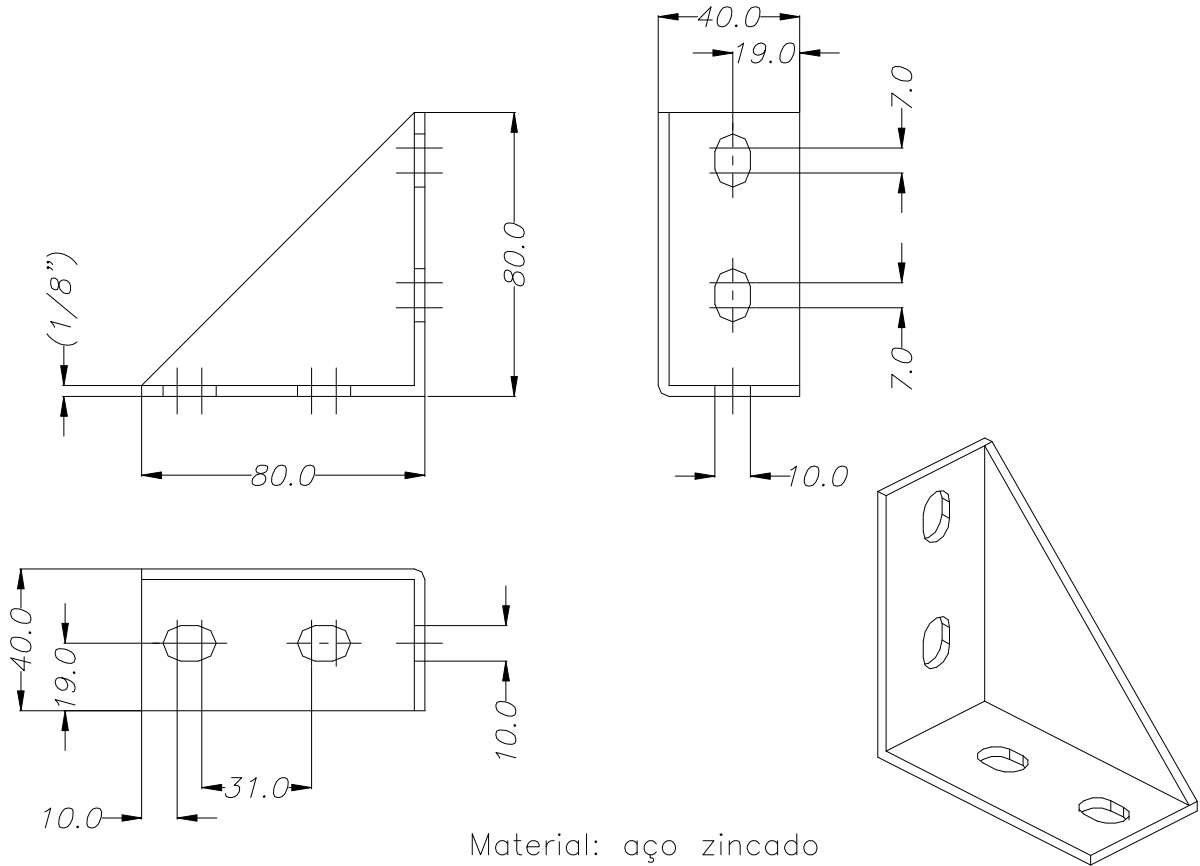
EL CA02



EL CA03

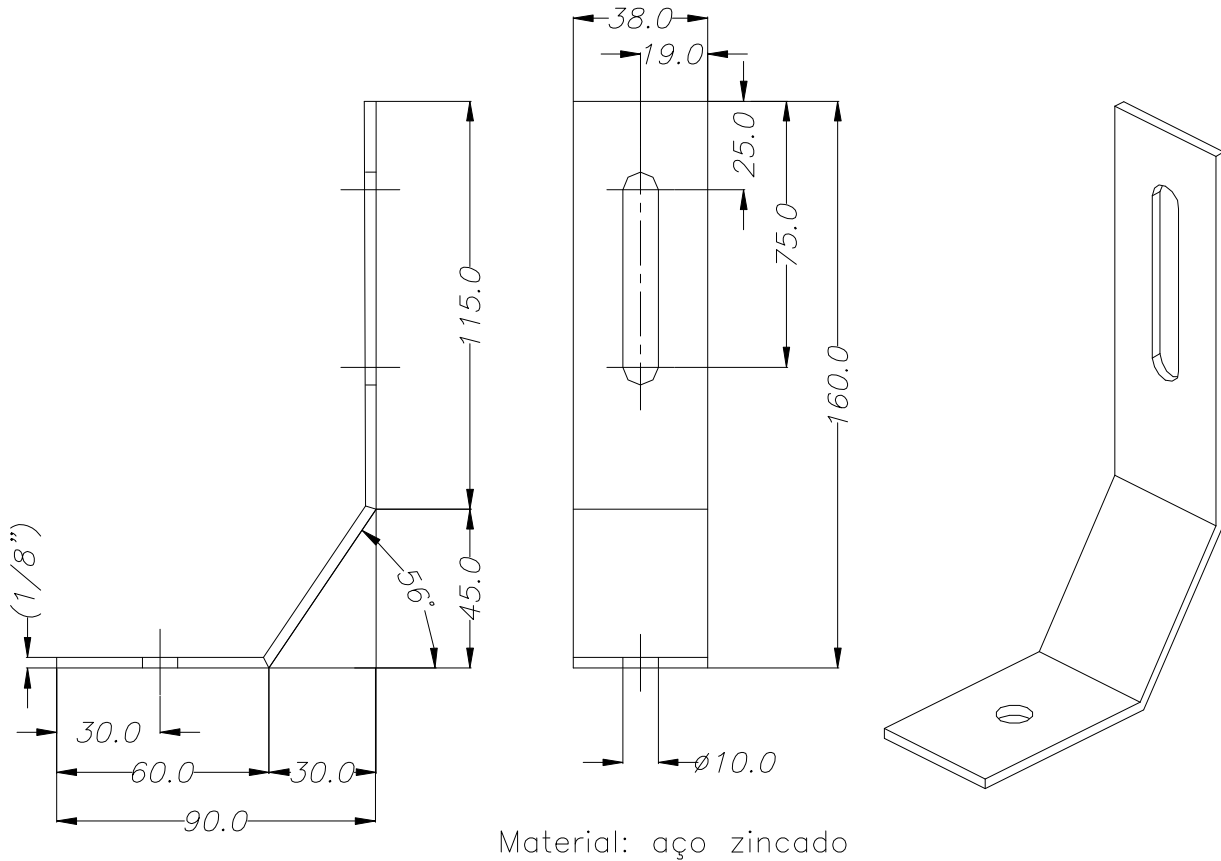
### CANTONEIRA 80x80x40

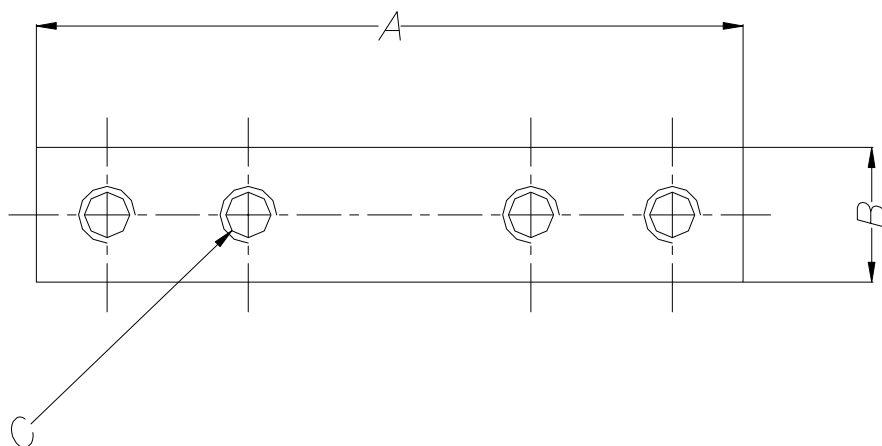
13



EL EF01

### ESQUADRO DE FUNDAÇÃO



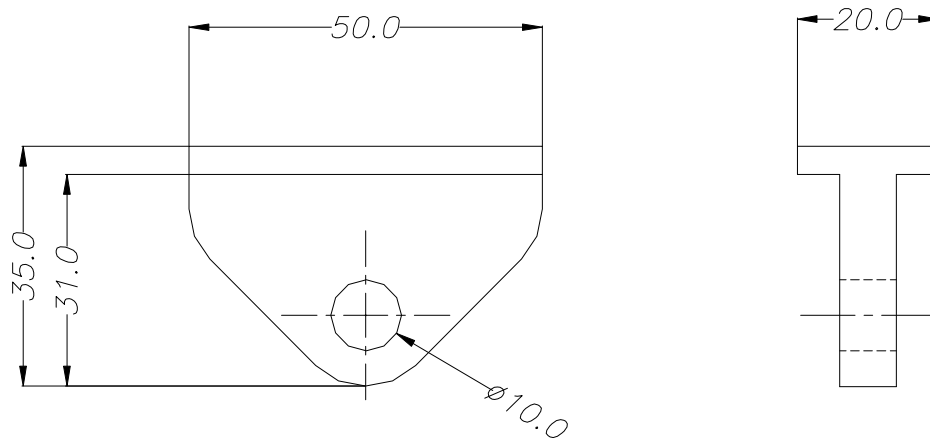
**14****UNIÃO de PERFIL**

Código	A	B	C	Perfil
EL UN01	80.0	15.0	M6	30
EL UN02	100.0	19.0	M8	40/45

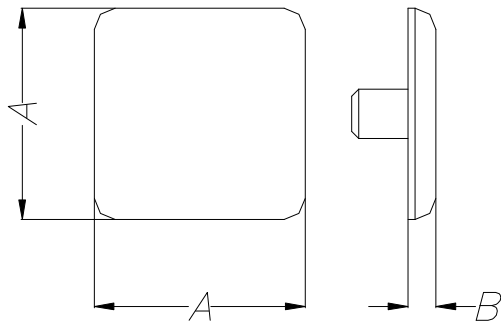
Material: aço zincado

**SUPORE p/ BALANCIM**

EL BA01



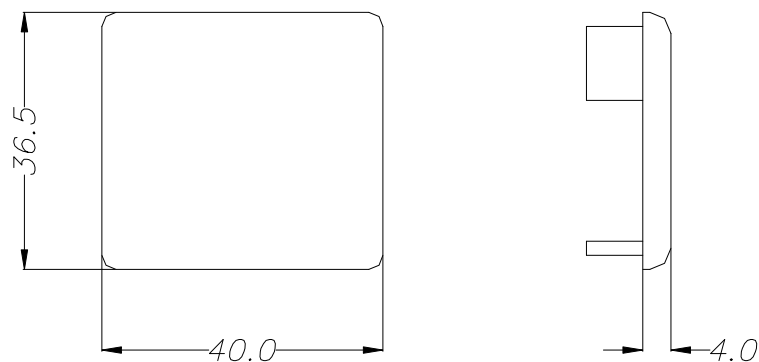
Material: nylon

**TAMPA DE ACABAMENTO P/ PERFIL****15**

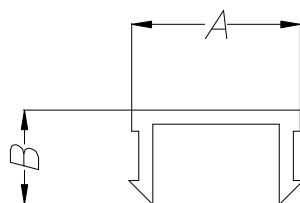
Material: PP

Código	A	B	Perfil
EL TA01	30.0	4.0	30
EL TA02	40.0	4.0	40
EL TA03	45.0	4.0	45

EL TA04

**TAMPA DE ACABAMENTO P/ TRILHO**

Material: PP

**PERFIL PVC**

Material: PVC

Cores: Preto  
Azul  
Vermelho  
Amarelo  
Branco

Código	A	B	Perfil
EL AC01	10.0	4.2	30
EL AC02	12.0	6.7	40/45